

# NEXus – The Nursing Education Exchange

Beth Mastel-Smith, PhD, MS, RN

**Doctoral Research Training Partnerships:  
Sustainable Solutions for PhD Education**

# Objectives

- ▶ Introduce NEXus
  - ▶ History
  - ▶ Operations
  - ▶ Course offerings
- ▶ Describe benefits of being a NEXus member institution
- ▶ Identify potential cost savings for member institutions

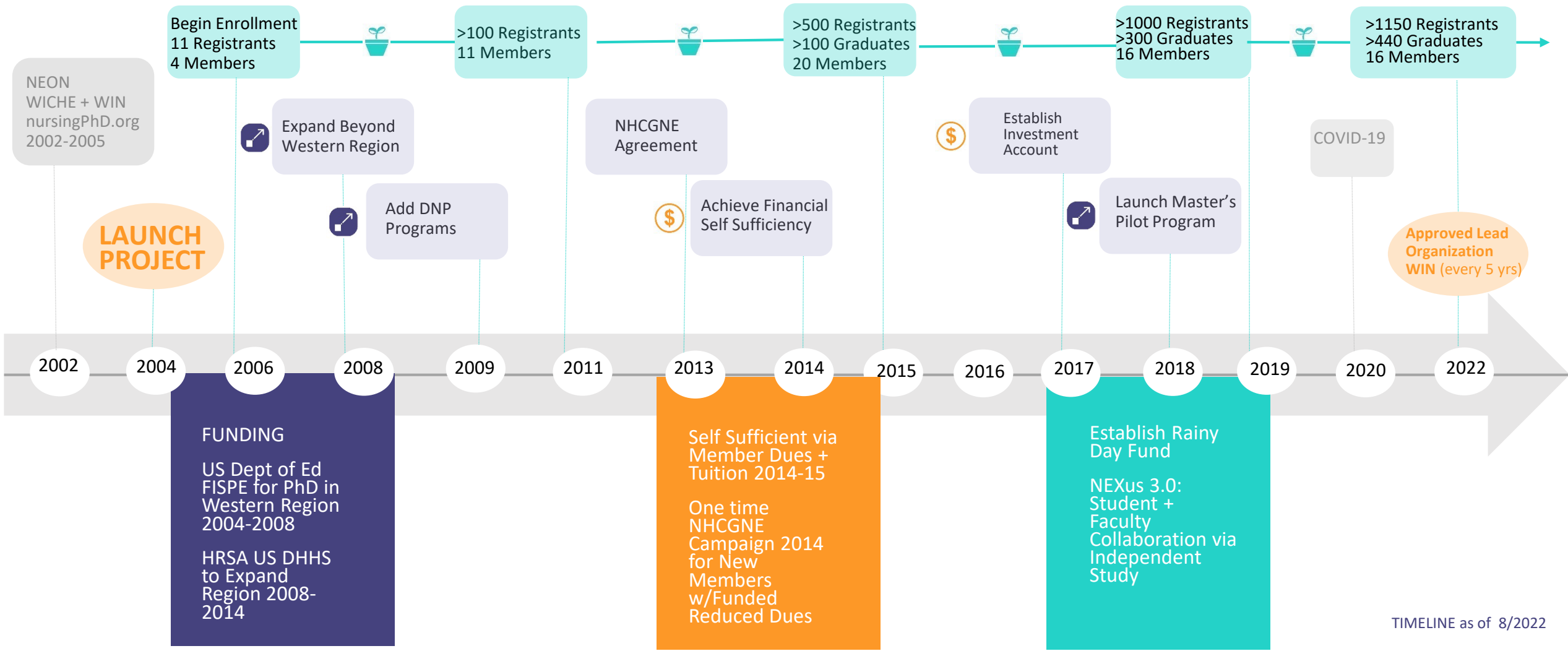


**What electives do your students need that are not offered at your institution?**

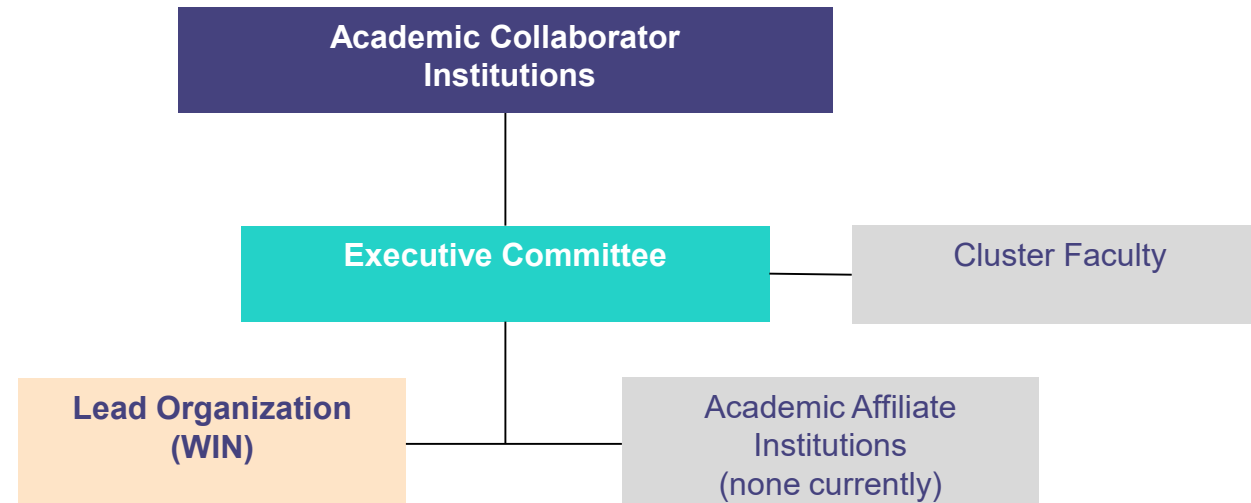


# NEXUS

THE NURSING EDUCATION XCHANGE



# Organizational Chart



- ▶ Executive Committee = Representative from each Member Academic Collaborator
- ▶ Officers elected to Committee
- ▶ Each Collaborator identifies a Faculty Coordinator + Campus Staff Coordinator

# Foundational Documents

## Guiding Principles

- ▶ Philosophical approach
- ▶ Principles underlying the collaborative

## Memorandum of Agreement

- ▶ Signed by deans & administrators

## Bylaws, policies & procedures

- ▶ Operating procedures provide structure

# Member Institutions

- ▶ Arizona State University
- ▶ Loma Linda University
- ▶ Oregon Health & Science University\*
- ▶ The Ohio State University
- ▶ The University of Iowa
- ▶ The University of Texas at Tyler
- ▶ University of Colorado Denver\*
- ▶ University of Oklahoma
- ▶ University of Hawaii at Manoa
- ▶ University of Kansas
- ▶ University of Nevada Las Vegas
- ▶ University of New Mexico
- ▶ University of North Colorado\*
- ▶ Virginia Commonwealth University
- ▶ Washington State University
- ▶ University of Utah\*

*\*Founding Member*





# Online Courses

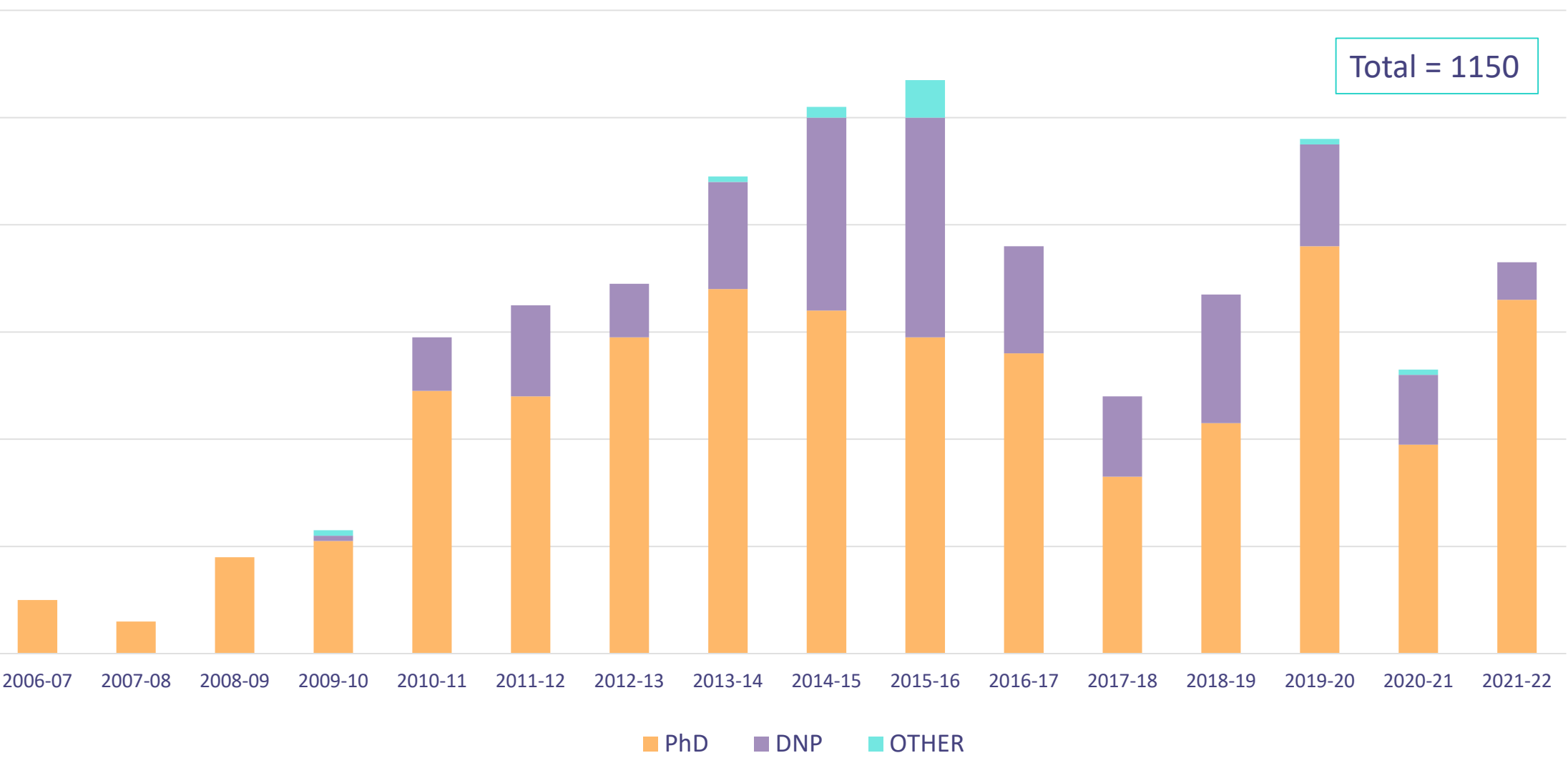
> 250 Masters level, PhD or DNP / year

Clusters include:

- ▶ Children, Parents & Family
- ▶ Chronic & Disabling Conditions & Palliative Care
- ▶ Diverse & Vulnerable Populations
- ▶ Ethics
- ▶ Gerontology & Geriatric Nursing
- ▶ Nursing Education
- ▶ Nursing Knowledge Development: Theory, Philosophy, and Science
- ▶ Research Methodology
- ▶ Scholarship & Writing
- ▶ Scientific Underpinnings for Advanced Nursing Practice
- ▶ Special Topics
- ▶ Systems, Leadership, Informatics and Policy

# NEXus Enrollment by Type of Student

Total = 1150



# Operations

- ▶ Institutions pay annual dues
  - ▶ \$5,000 or \$6,000
- ▶ Shared database
  - ▶ Course promotion
  - ▶ Student registration & tracking
- ▶ Faculty representative & campus staff coordinator
  - ▶ Troubleshoot
  - ▶ Registration & paperwork

# Operations

Students pay common tuition

- ▶ \$865 / semester credit

Organizational

- ▶ Anne Boerner, Project Director, NEXus
- ▶ Bo Perry, Executive Director

Western Institute of Nursing (Lead organization)

- ▶ Collect & distribute tuition between home and teaching institution
- ▶ Maintain / update database
- ▶ Market – NEXus and courses
- ▶ Conduct and analyze course evaluations





# Evaluation Comments

*“Having NEXUS students in our classes has been engaging and energizing for both faculty and students. We have formed new and fruitful research partnerships from relationships that began with a class.” **PhD Faculty***

*“Over the years we have had PhD and DNP students take courses at the premier partner universities that have facilitated and augmented their understanding of topics of interest.” **PhD Faculty***

*“I would summarize the NEXus process as being all about options and choices driven by you. What attracted me to the NEXus process was the ability to customize my program’s elective classes in a more specific and meaningful way, with topics of my interest. My NEXus experience was amazing and I would do it again; this, despite the higher per credit cost when compared with my local university.” **Doctoral Student***

# Income + Cost Savings

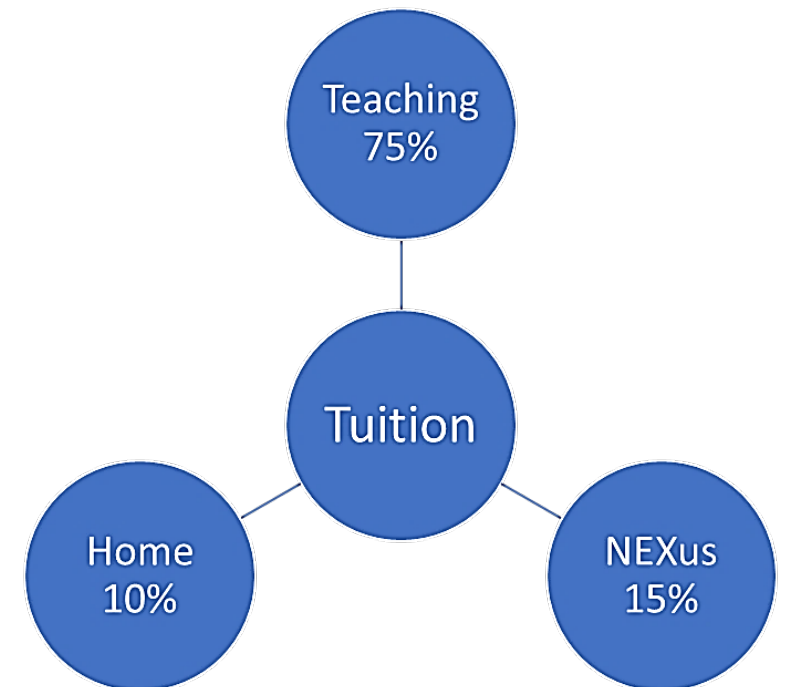
**NEXus Members gain tuition and cost savings benefits**

## 1. Tuition Income

- ▶ Generate additional tuition by providing course seats for enrollment
- ▶ Generate tuition by sending student to courses

## 2. Course Savings by Sending Students

- ▶ Realize cost savings on instructor salaries (estimated at \$12,300 each)
- ▶ Save on course development costs (estimated at \$5,300 each)



# 2021-22 NEXus Cost Savings + Income



2021-2022	Enrollments			Cost Savings*		Income	TOTAL
	# of Courses Offered	# of Registrations (in and out)	Total Credits	Faculty Salaries at \$12,300 each	Course Development at \$5,300 each	Total Tuition Share	Cost Savings + Income
<b>Member Average</b>	15	11	15	\$51,506	\$22,194	\$10,761	\$84,461
<b>Total Members</b>	246	168	234	\$355,100	\$824,100	\$172,172	\$1,351,372

\*Course Savings are estimates only and will vary by institution. NEXus estimate is based on: 1. Base salary of \$90,800\* with paid benefits of 21.8%\*\* , totaling \$110,600 (rounded to nearest hundred); 2. Average faculty course load equivalent of nine/year; 3. Hourly rate = \$110,600 divided by 52 weeks at 40 hours a week = \$53; and 4. Estimate of 100 hours to develop one course.

\*Source: Table 76 AACN 2019-2020 Salaries of Instructional and Administrative Nursing Faculty \*\* Source: Survey Report Tables 8 & 9 AAUP Annual Report on the Economic Status of the Profession, 2019-20



# Questions?